

## GEAR PUMPS

Bombas de engranajes  
Zahnradpumpen  
Pompes à engrenages

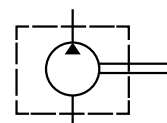


### Gr.I Gear pump/ Eur.flange/tapered shaft 1:8 /threaded side ports type

Gr.I Bombas engranaje/tapa eur/eje cónico 1:8 / roscada

Gr.I Zahnradpumpe/Europafansch/konische Welle 1:8/Seitenanschluss mit Gewinde

Gr.I Pompe engrenage/flasque Eur./Arbre conique 1:8 / Asp.et ref. type taraudée



Right turn Giro a derechas	Left turn Giro a izquierdas	Ø ASPIRACION Ø ASPIRACIÓN	Ø PRESSION Ø PRESIÓN	MAX PRESSURE (bar) PRESION MAX.(bar)	R.P.M. Max	cm <sup>3</sup> /rev	€
BTD111D01	BTD111I01	3/8" BSP	3/8" BSP	250	6000	1,1	
BTD116D01	BTD116I01	3/8" BSP	3/8" BSP	250	6000	1,6	
BTD118D01	BTD118I01	3/8" BSP	3/8" BSP	250	6000	1,8	
BTD127D01	BTD127I01	3/8" BSP	3/8" BSP	250	6000	2,7	
BTD132D01	BTD132I01	3/8" BSP	3/8" BSP	250	5000	3,2	
BTD137D01	BTD137I01	3/8" BSP	3/8" BSP	250	4500	3,7	
BTD148D01	BTD148I01	3/8" BSP	3/8" BSP	200	4000	4,8	
BTD158D01	BTD158I01	1/2" BSP	3/8" BSP	200	3500	5,8	
BTD163D01	BTD163I01	1/2" BSP	3/8" BSP	200	2900	6,3	
BTD180D01	BTD180I01	1/2" BSP	3/8" BSP	200	2100	8	

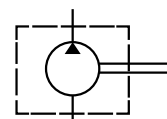


### Gr.I Gear pump/ Eur.flange/tapered shaft 1:8 /side ports type German

Gr.I Bombas engranaje/tapa eur/eje cónico 1:8 / brida alemana

Gr.I Zahnradpumpe/Europafansch/konische Welle 1:8/Seitenanschluss Type Deutsch

Gr.I Pompe engrenage/flasque Eur./Arbre conique 1:8 / Asp.et ref. type Allemande



Right turn Giro a derechas	Left turn Giro a izquierdas	ASPIRATION FLANGE (mm) BRIDA ASPIRACION (mm)	PRESSURE FLANGE (mm) BRIDA PRESION (mm)	MAX. PRESSURE (bar) PRESION MAX.(bar)	R.P.M. Max	cm <sup>3</sup> /rev	€
BTD111D03	BTD111I03	30	30	250	6000	1,1	
BTD116D03	BTD116I03	30	30	250	6000	1,6	
BTD118D03	BTD118I03	30	30	250	6000	1,8	
BTD127D03	BTD127I03	30	30	250	6000	2,7	
BTD132D03	BTD132I03	30	30	250	6000	3,2	
BTD137D03	BTD137I03	30	30	250	4500	3,7	
BTD148D03	BTD148I03	30	30	200	4000	4,8	
BTD158D03	BTD158I03	30	30	200	3500	5,8	
BTD163D03	BTD163I03	30	30	200	2900	6,3	
BTD180D03	BTD180I03	30	30	200	2100	8	

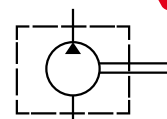


### Gr.I Gear pump/Mini power packs

Gr.I Bombas engranaje/Minicentralita

Gr.I Zahnradpumpe/Mini-Aggregate

Gr.I Pompe engrenage/MIni-centrales hydrauliques



NEW

Part n° Referencia	Ø PRESSURE (mm) Ø PRESIÓN (mm)	Ø ASPIRACION Ø ASPIRACIÓN	MAX PRESSURE.(bar) PRESION MAX.(bar)	R.P.M. Max	cm <sup>3</sup> /rev	€
BTD111D05	9	3/8" BSP	200	6000	1,1	
BTD121D05	9	3/8" BSP	200	6000	2,1	
BTD132D05	9	3/8" BSP	200	5000	3,2	
BTD142D05	9	3/8" BSP	200	4000	4,2	
BTD158D05	9	3/8" BSP	160	2900	5,8	
BTD170D05	9	3/8" BSP	160	2900	7,0	
BTD180D05	9	3/8" BSP	160	2100	8,0	
BTD198D05	9	3/8" BSP	160	2100	9,8	

Clockwise/ Giro a derechas / Rechtsdrehung / Rotation droite

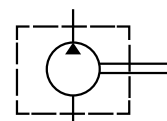
## GEAR PUMPS

Bombas de engranajes  
Zahnradpumpen  
Pompes à engrenages



### Gr.II Gear pump/Eur.flange/Tapered shaft 1:8 /Threaded Side ports type

Gr. II Bomba engranaje/Tapa eur/eje cónico 1:8 / Brida roscada  
Gr.II Zahnradpumpe/Europafansch/konische Welle 1:8/Seitenanschluss mit Gewinde  
Gr.II Pompe engrenage/Flasque Eur./Arbre conique 1:8/ Asp. et Ref type Taraudée

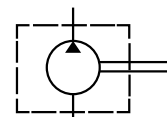


Right turn Giro a derechas	Left turn Giro a izquierdas	Ø ASPIRATION Ø ASPIRACIÓN	Ø PRESSURE Ø PRESIÓN	MAXIMUM PRESSURE (Bar) PRESIÓN MAX. (Bar)	R.P.M. Max	cm <sup>3</sup> /rev	€
BTD240D01	BTD240I01	1/2" BSP	1/2" BSP	250	3500	4	
BTD260D01	BTD260I01	1/2" BSP	1/2" BSP	250	3500	6	
BTD280D01	BTD280I01	1/2" BSP	1/2" BSP	250	3500	8	
BTD2100D01	BTD2100I01	1/2" BSP	1/2" BSP	250	3500	10	
BTD2120D01	BTD2120I01	1/2" BSP	1/2" BSP	250	3500	12	
BTD2140D01	BTD2140I01	3/4" BSP	1/2" BSP	250	3500	14	
BTD2160D01	BTD2160I01	3/4" BSP	1/2" BSP	250	3500	16	
BTD2200D01	BTD2200I01	3/4" BSP	1/2" BSP	250	3500	20	
BTD2230D01	BTD2230I01	3/4" BSP	1/2" BSP	200	3000	23	
BTD2250D01	BTD2250I01	3/4" BSP	1/2" BSP	200	3000	25	
BTD2280D01	BTD2280I01	3/4" BSP	1/2" BSP	160	3000	28	
BTD2300D01	BTD2300I01	3/4" BSP	1/2" BSP	160	3000	30	



### Gr.II Gear pump/Eur.flange/Tapered shaft 1:8 /Side ports type Eur.

Gr. II Bomba engranaje/Tapa eur/eje cónico 1:8 / Brida europea  
Gr.II Zahnradpumpe/Europafansch/konische Welle 1:8/Seitenanschluss Type Europäisch  
Gr.II Pompe engrenage/Flasque Eur./Arbre conique 1:8/ Asp. et Ref type Eur.

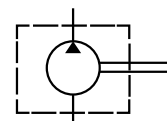


Right turn Giro a derechas	Left turn Giro a izquierdas	Ø ASPIRATION (mm) Ø ASPIRACIÓN (mm)	Ø PRESSURE (mm) Ø PRESIÓN (mm)	MAXIMUM PRESSURE (Bar) PRESIÓN MAX. (Bar)	R.P.M. Max	cm <sup>3</sup> /rev	€
BTD240D02	BTD240I02	30	30	250	3500	4	
BTD260D02	BTD260I02	30	30	250	3500	6	
BTD280D02	BTD280I02	30	30	250	3500	8	
BTD2100D02	BTD2100I02	30	30	250	3500	10	
BTD2120D02	BTD2120I02	30	30	250	3500	12	
BTD2140D02	BTD2140I02	40	30	250	3500	14	
BTD2160D02	BTD2160I02	40	30	250	3500	16	
BTD2200D02	BTD2200I02	40	30	250	3500	20	
BTD2230D02	BTD2230I02	40	30	200	3000	23	
BTD2250D02	BTD2250I02	40	30	200	3000	25	
BTD2280D02	BTD2280I02	40	30	160	3000	28	
BTD2300D02	BTD2300I02	40	30	160	3000	30	



### Gr. II Gear pump/Bosch flange/Tapered shaft 1:5 /Side ports German type

Gr. II Bomba engranaje/Tapa Bosch/eje cónico 1:5 / Brida alemana  
Gr.II Zahnradpumpe/BOSCH-Flansch/konische Welle 1:5/Seitenanschluss Type BOSCH  
Gr.II Pompe engrenage/Flasque Bosch/Arbre conique 1:5/ Asp. et Ref type Allemande



Right turn Giro a derechas	Left turn Giro a izquierdas	Ø ASPIRATION (mm) Ø ASPIRACIÓN (mm)	Ø PRESSURE (mm) Ø PRESIÓN (mm)	MAXIMUM PRESSURE (Bar) PRESIÓN MAX. (Bar)	R.P.M. Max	cm <sup>3</sup> /rev	€
BTD260D04	BTD260I04	40	35	250	3500	6	
BTD280D04	BTD280I04	40	35	250	3500	8	
BTD2120D04	BTD2120I04	40	35	250	3500	12	
BTD2140D04	BTD2140I04	40	35	250	3500	14	
BTD2160D04	BTD2160I04	40	35	250	3500	16	
BTD2200D04	BTD2200I04	40	35	250	3500	20	
BTD2230D04	BTD2230I04	40	35	200	3000	23	
BTD2250D04	BTD2250I04	40	35	200	3000	25	
BTD2280D04	BTD2280I02	40	30	160	3000	28	

## GEAR PUMPS

Bombas de engranajes  
Zahnradpumpen  
Pompes à engrenages

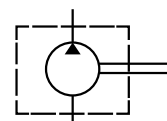


### Gr.III Gear pump/Eur.flange/Tapered shaft 1:8 /Side ports type threaded

Gr.III Bombas engranaje/Tapa eur/eje conico 1:8 brida roscada

Gr.III Zahnradpumpe/Europaflansch/konische Welle 1:8/Seitenanschluss mit Gewinde

Gr.III Pompe engrenage/Flasque eur./Arbre conique1:8 /Asp.et Ref. taraudée



Right turn Giro a derechas	Left turn Giro a izquierdas	Ø ASPIRATION Ø ASPIRACION	Ø PRESSURE Ø PRESION	MAXIMUM PRESSURE (Bar) PRESION MAX. (Bar)	R.P.M. Max	cm <sup>3</sup> /rev	€
BTD3220D01	BTD3220I01	3/4" BSP	3/4" BSP	200	3000	22	
BTD3260D01	BTD3260I01	3/4" BSP	3/4" BSP	200	3000	26	
BTD3280D01	BTD3280I01	1" BSP	3/4" BSP	200	3000	28	
BTD3320D01	BTD3320I01	1" BSP	3/4" BSP	200	3000	32	
BTD3360D01	BTD3360I01	1" BSP	3/4" BSP	200	3000	36	
BTD3420D01	BTD3420I01	1" BSP	3/4" BSP	200	2800	42	
BTD3460D01	BTD3460I01	1" BSP	3/4" BSP	200	2400	46	
BTD3500D01	BTD3500I01	1" BSP	3/4" BSP	200	2400	50	
BTD3550D01	BTD3550I01	1" BSP	3/4" BSP	200	2400	55	

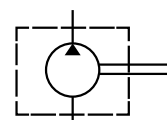


### Gr.III Gear pump/Eur.flange/Tapered shaft 1:8 /Side ports type Eur.

Gr.III Bombas engranaje/Tapa eur/eje cónico 1:8 brida europea

Gr.III Zahnradpumpe/Europa-Flansch/konische Welle 1:8 /Seitenanschluss Type Europäisch

Gr.III Pompe engrenage/Flasque eur./Arbre conique 1:8 /Asp.et Ref. type Eur.



Right turn Giro a derechas	Left turn Giro a izquierdas	Ø ASPIRATION (mm) Ø ASPIRACION (mm)	Ø PRESSURE (mm) Ø PRESION (mm)	MAX. PEAK PRESSURE (Bar) PRESION PUNTA (Bar)	R.P.M. Max	cm <sup>3</sup> /rev	€
BTD3220D02	BTD3220I02	40	40	250	3000	22	
BTD3260D02	BTD3260I02	40	40	250	3000	26	
BTD3280D02	BTD3280I02	40	40	250	3000	28	
BTD3340D02	BTD3340I02	50	40	250	3000	34	
BTD3390D02	BTD3390I02	50	40	250	3000	39	
BTD3430D02	BTD3430I02	50	40	250	2800	43	
BTD3460D02	BTD3460I02	50	40	250	2400	46	
BTD3510D02	BTD3510I02	50	40	250	2400	51	
BTD3550D02	BTD3550I02	50	40	250	2400	55	

## GEAR PUMPS

Bombas de engranajes  
Zahnradpumpen  
Pompes à engrenages

### BTD pump joints kit



Kit juntas Bomba BTD  
Dichtungssatz Pumpe BTD  
Kit joints pompe BTD

Part n° Referencia	GROUP GRUPO	MATERIAL	€
JRBDT1-N	1	NBR	
JRBDT2-N	2	NBR	
JRBDT3	3	NBR	
JRVBDT1-N	1	FKM	
JRVBDT2-N	2	FKM	
JRVBDT3	3	FKM	

### 90° Elbow for European flange with 3 fixing holes



Codo 90° para brida Europea con 3 agujeros de fijación  
Winkel-Europaflansch 90° 3 Loch  
Coude 90° pour bride Européenne avec 3 trous de fixation

Part n° Referencia	THREAD ROSCA	SCREWS THREAD ROSCA TORNILLOS	DISTANCE BETWEEN SCREWS DISTANCIA ENTRE TORNILLOS	€
RP901038M	3/8" BSP	M6X20* x3 uds	30mm	
RP901012M	1/2" BSP	M6X20* x3 uds	30mm	
RP902012M	1/2" BSP	M8X25* x3 uds	40mm	
RP902034M	3/4" BSP	M8X25* x3 uds	40mm	
RP903A034M	3/4" BSP	M10X30* x3 uds	51mm	
RP903A100M	1" BSP	M10X30* x3 uds	51mm	

\*The Metric thread of the screws / \*Rosca Métrica de los tornillos / \*Metrisches Gewinde der Schrauben / \*Filetage Métrique des vis

### Straight flange



Brida recta  
Gerader Flansch  
Bride droite

Part n° Referencia	THREAD ROSCA	SCREWS THREAD ROSCA TORNILLOS	Ø	€
RPI1M	3/8" BSP	M6X16* x4 uds	30	
RPI2M	1/2" BSP	M8X20* x4 uds	40	
RPI3AM	3/4" BSP	M10X25* x4 uds	51	

\*The Metric thread of the screws / \*Rosca Métrica de los tornillos / \*Metrisches Gewinde der Schrauben / \*Filetage Métrique des vis

### 90° Elbow for 4-holes squared shape flange



Codo 90° para brida Bosch con 4 agujeros de fijación  
Winkel-Boschflansch 90° 4 Loch  
Coude 90° pour bride 4 trous de fixation forme carré

Part n° Referencia	THREAD ROSCA	SCREWS THREAD ROSCA TORNILLOS	Ø	€
GF3590038	3/8" BSP	2-M6X35 / 2-M6X20*	35	
GF3590012	1/2" BSP	2-M6X35 / 2-M6X20*	35	
GF4090012	1/2" BSP	2-M6X45 / 2-M6X20*	40	
GF4090034	3/4" BSP	2-M6X45 / 2-M6X20*	40	

\*The Metric thread of the screws / \*Rosca Métrica de los tornillos / \*Metrisches Gewinde der Schrauben / \*Filetage Métrique des vis

### Key



Chavetas  
Paßfedern  
Clavette

Part n° Referencia	GROUP AXIS 1:8 GRUPO EJE 1:8	€
CVTBTD1	1	
CVTBTD2	2	
CVTBTD3	3	